


## Voltage Control Guard - Answers to Frequently Asked Questions

- Average monthly reductions of 5-20% in Kilowatt Hours (kWh) from our install base
- The result of 10 years of research, development, and field testing with proof positive results
- Environmentally safe and ecologically friendly with no moving parts, noise, heat or emissions
- Tested and certified by Met labs to comply with UL916 Safety Standards
- Affordable - Allowing a Quick Return on Investment
- the VCG does not require the use of surge suppressors or spike protection.
- The VCG unit is installed on the neutral side of a power distribution panel. It is not a consumer of electricity but rather a passive device designed to provide energy savings.
- Verified and certified by third-party lab testing to consistently deliver a reduction of at least 5% in kWh consumption
- Proudly Made in The USA!

Manufactured by:

**GIG<sup>2</sup>** Group, Inc.  
Cumming, GA

UPCI Member Churches that are currently enjoying great savings from the VCG Energy Management Device includes:

 Faith Tabernacle Church - Conyers, GA  
Dr. J. A. Patterson

*For ordering information please contact your VCG/UPCI Sales Coordinator below*

**Pastor Charles Harvey**  
**(770) 630-5260**



5755 N Point Parkway  
Suite 46  
Alpharetta, GA 30022  
678-366-4566

[www.techbios.com](http://www.techbios.com)



## Save Energy and Reduce your Electric Bills

*.....A Special Offer to the UPCI  
Family of Churches*



Voltage  
Control  
Guard

Energy  
Management  
Device





## What is the Voltage Control Guard?

The Voltage Control Guard (VCG) is a low cost, easy to install Energy Management Device that will reduce your electric power bills by reducing your energy consumption. It purifies and filters the electric power delivered to your appliances and equipment. The VCG accomplishes this task by substantially reducing or eliminating the impure electric current commonly referred to as “noise” that is generated from non-linear electrical loads that is pushed to the neutral side in your electrical panel.

## How the VCG Works

The VCG device is installed on each electrical panel box by connection to the neutral bus bar(s) and safety ground. Its operational 24x7x365 and requires no maintenance.

- Noise is generated from non-linear loads and is driven to the neutral wire for return
- The VCG “traps” the returning electricity on the neutral side, cleaning the noise and making much of the power reusable in your system
- This energy is returned with proper phase and polarity on the neutral side thus decreasing overall demand.

By cleansing the neutral side, you will see an improvement in equipment operations as well as a reduction in daily Kilowatt consumption resulting in lower power bills.

## Result from a UPCI Church Installation

### Faith Tabernacle Church (Conyers, GA)

Install Date: 2/5/2009

2008 (Prior to installation of VCG)													
	Jan	Feb	Mar	Apr	May	Jun	Jul	Aug	Sep	Oct	Nov	Dec	Total
Bill (\$)	577	553	567	644	830	878	812	778	695	647	621	615	8218
Days	31	29	31	30	31	30	31	31	30	28	33	31	366
kWh	4875	4468	4700	4692	5411	5873	5104	4778	3997	4403	5121	4446	57868
Avg kWh	157	154	152	156	175	196	165	154	133	157	155	143	158
2009 (VCG installed on 2/5/09 *Billing Cycle 1/17/2009 - 2/17/09)													
	Jan	Feb	Mar	Apr	May	Jun	Jul	Aug	Sep	Oct	Nov	Dec	Total
Bill (\$)	602	560	553	637	678	726	849	842	563	516	488		7013
Days	31	28	31	28	33	30	31	31	30	31	30		334
kWh	4034	3450	3354	3769	3615	4045	5165	5064	2471	2431	2445		39843
Avg kWh	130	123	108	135	110	135	167	163	82	78	82		
08 Vs 09 (%)													
Savings	-17.25	-20.03	-28.64	-13.93	-37.24	-31.13	1.20	5.99	-38.18	-50.13	-47.48		
GREEN Install Months													
RED Highest two months prior to Install      Blue Highest two months after Install													

By comparing the Average Daily Kilowatt Hours (kWh) consumption from previous years to the same billing cycles for the current year, we are able to demonstrate the reduction in kWh used when the VCG is installed. From the chart above, the average daily kWh usage is significantly lowered in ALL cases at Faith Tabernacle Church. Based on the average savings per month the ROI is projected at 5 months with continued savings for many years to come.

## Independent Test Lab Analysis

WAJA Associates, Inc. - Foxboro, MA

Test Dates: 8/17/09 - 8/19/2009

## Summarized Results:

READING	PHASE	WITHOUT VCG	WITH VCG	% DIFF
kWh	3 Phase Avg.	20.88 kWh	19.42 kWh	7%

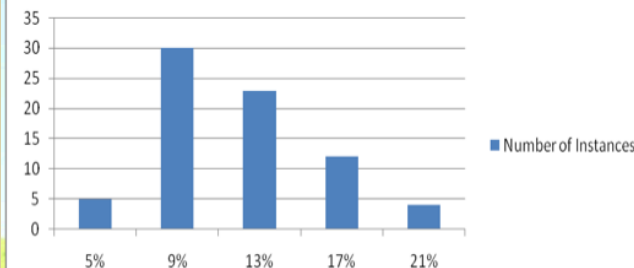
The VCG has demonstrated consistent savings from independent lab tests with the results borne out in our field installations.

Our residential customers has experienced significant savings and our unit has proven to be quite effective regardless of location, size, and age of homes.

Our commercial customer base includes fast food restaurants, churches, schools, hardware stores, grocery stores, and offices.

## Commercial Installations

Distribution of Commercial Savings Percentage



## Our Offer:

TechBios greatly appreciates the opportunity to present the VCG to the UPCI family of churches. We will donate \$50 from the sale of each device to churches where church members purchase the VCG for their residences.

## Cost of Unit:

The cost of each VCG device is \$549 exclusive of taxes, shipping, and installation.